

May 9-11:49 AM

30.1 Review

Grade: 10th
Subject: Biology
Date: 5/9

May 9-11:54 AM

1 Which of the following does not describe a primary function of hair?

- A sensory device
- B waterproofing
- ☒ C insulation
- D movement

May 9-11:55 AM

2 Animals that feed on both plants and animals are called _____ omnivores _____.

May 9-11:56 AM

3 Which is not a beneficial result of a highly developed cerebrum?

- A mother fox teaching young survival skills
- B squirrels' balance and coordination
- C mother tiger teaching young hunting skills
- D mice remembering layout of habitat

May 9-12:27 PM

4 How many chambers are there in the mamallian heart?

4

May 9-12:28 PM

5 What are two similarities between mammal and bird circulatory systems?

- A two chamber heart, lack capillaries
- B four chambered heart, blended oxygenated and deoxygenated blood
- C two-chamberd heart, capillaries
- D four chambered heart, seperate oxygenated and deoxygenated blood

May 9-12:32 PM

30.2 Review

Grade: 10th
Subject: Biology
Date: 5/14

May 14-9:31 AM

1 Beavers and squirrels are in the _____ order.
Which is known for gnawing ~~with~~ sharp incisors.
with

- A Carnivora
- B Lagomorpha
- ☒ C Rodentia
- D Xenartha

May 15-11:53 AM

2 Which statement provides evidence that mammals evolved from therapsids.

- A therapsids had a skull with compatible jaw muscles
- ☒ B therapsids were covered with hair
- C therapsids might have been endotherms
- D therapsids had limbs positioned beneath their bodies

May 15-11:55 AM

3 Pouched mammals whose offspring have a very short development in the uterus are called _____.

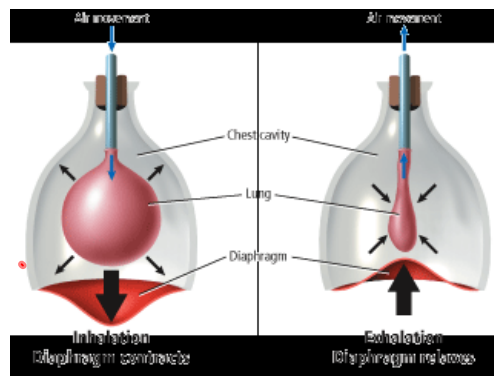
marsupials

Kangaroo

May 15-11:56 AM

4 What does the picture below show?

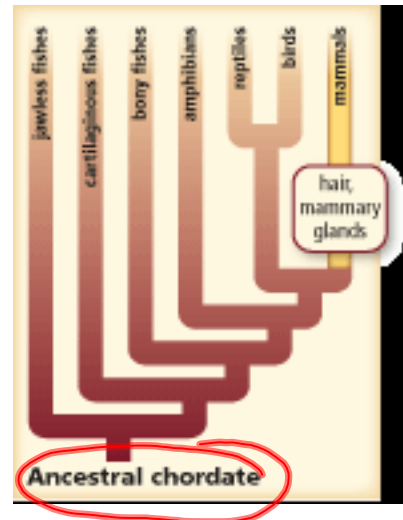
- ☒ A exhalation caused by diaphragm
- ☐ B inhalation caused by diaphragm
- ☐ C intake of carbon dioxide
- ☐ D heart contraction



May 15-11:57 AM

5 Based on the figure below, what evolutionary similarities do mammals and birds have?

- A both have mammary glands
- B both have hair
- C both have chordate ancestry
- D both have wings



May 15-11:59 AM

6 The order Lagomorpha includes _____.

- ☒ A rabbits
- B tigers
- C kangaroos
- D muskrats

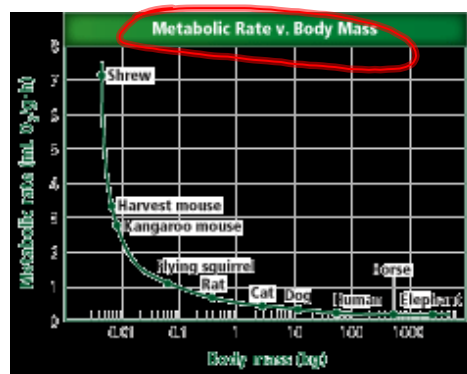
May 15-12:35 PM

7 Mammals that reproduce by laying eggs are called Monotremes.

May 15-12:36 PM

8 What does this graph show?

- A body temperature and metabolic rate
- B the mass, height, and length of various animals
- C relationship of a mammal's mass to body temperature
- ☒ D relationship of a mammal's metabolic rate to its mass



May 15-12:38 PM

9 What is the term for an animal that produces its own body heat through its metabolic processes (converting food to energy).

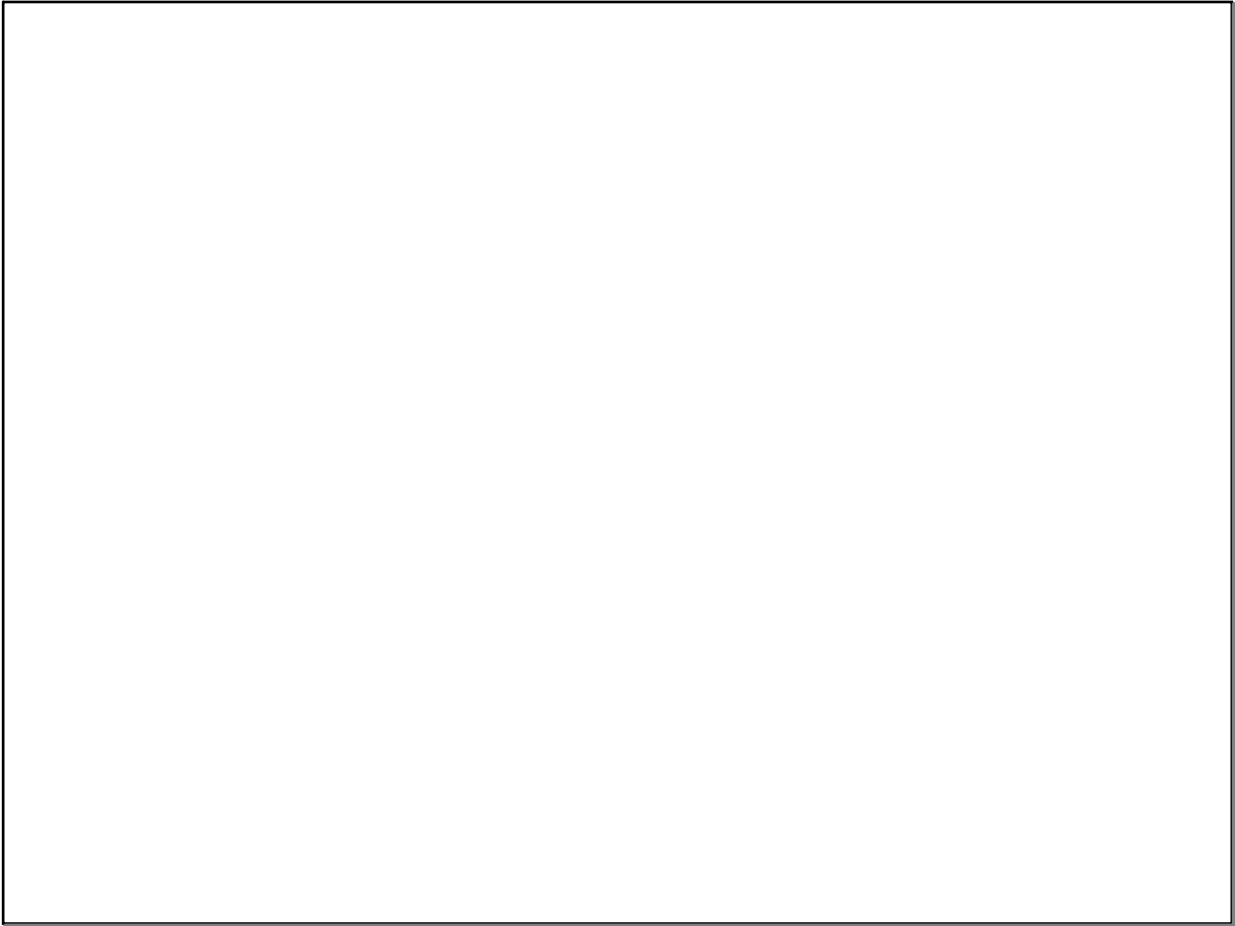
endothermic

warm-blood

May 15-1:29 PM

10 The Cenozoic Era is oftentimes referred to as the "Age of Mammals".

May 15-1:31 PM



May 14-9:32 AM